

## MOLDED CABLE CONNECTORS

Connectors DIN 43650 A – B – C (Micro) with molded cable available in various lengths. Available with a variety of different electronic circuits such as LED, VDR and others. Please see the table below. Please contact us for technical assistance and part numbers.

### TECHNICAL SPECIFICATIONS

Max. voltage: 250 V AC/300 V DC

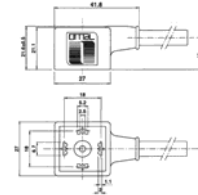
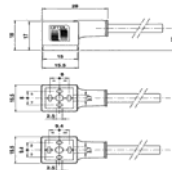
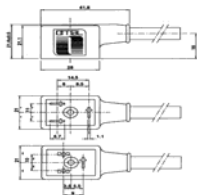
Max. current (in rush): 16 A

Operating current: 10 A

Protection class: NEMA 4, IP65

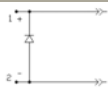


### ELECTRONIC CIRCUITS

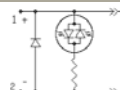


### CONNECTOR WITH ELECTRONIC COMPONENT

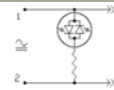
The most common executions are listed below. Our technical staff will assist you in finding the best solution.



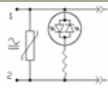
**DIODE** Voltage:250V  
Code: **L**



**DIODE+Bipolar LED** Voltage:10/50-70/250V  
Code: **M-N**



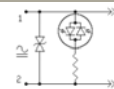
**Bipolar LED**  
Voltage: 10/50-70/250V Code: **B-C**



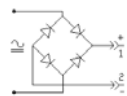
**Bipolar LED + VDR** Voltage:24-48-110-250V  
Code: **G-H-J-K**



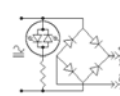
**VDR** Voltage:24-48-110-250V  
Code: **D-E-F-V**



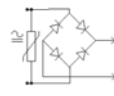
**Two Zener** Voltage:48V  
Code: **ZR**



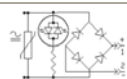
**Bridge rectifier** Voltage:250V  
(MICRO: only moulded cable)  
Code: **P**



**Bridge rectifier+bipolar LED**  
Voltage:10/50-70/250V (MICRO: only moulded cable)  
Code: **Q-R**



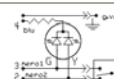
**Bridge rectifier+VDR**  
Voltage:24-48-110-250V (MICRO: only moulded cable)  
Code: **PD-PE-PF-PV**



**Bridge rectifier+VDR+LED**  
Voltage:24-48-110-250V (MICRO: only moulded cable)  
Code: **PGR-PHR-PJR-PKR**

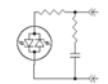


**Half wave rectifier+diode** Voltage: 250V  
Code: **W**



**Two color LED** Voltage:10/50-70/250V  
(only A version) Code: **BWW-CWW**

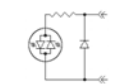
### LIGHT ADAPTORS



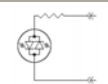
**RC + Bipolar LED** Voltage:10/50-70/250V  
Code: **U-X**



**Bipolar LED + VDR** Voltage:24-48-110-250V  
Code: **G-H-J-K**



**DIODE+Bipolar LED** Voltage:10/50-70/250V  
Code: **M-N**



**Bipolar LED** Voltage:10/50-70/250V  
Code: **B-C**