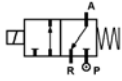


PILOT VALVE 3 WAY DIRECT ACTING FOR POTENTIALLY EXPLOSIVE ATMOSPHERES



normally closed

TYPE: N326CVEN

SOLENOID VALVE FITTED WITH EXPLOSION-PROOF OPERATOR, CLASS EEx m II T4

TECHNICAL SPECIFICATIONS

- Media: water, oil, air
- Media temperature: 14°F ÷ 140°F
- Ambient temperature: -4°F ÷ 122°F
- Body material: brass (C37700) with electroless nickel plating treatment
- Operator material: stainless steel
- Protection class: EEx m II T4
- Seal material: FKM
- Degree of protection: NEMA TYPE 4



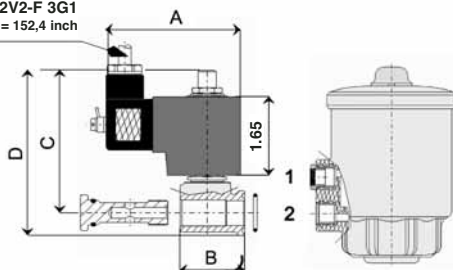
BENEFITS

- Coils are supplied with 9.85 foot power cable, wired a non removable plug
- Expressly designed to pilot Piston Valve ø 63 and ø 90
- Valve rotation by 360° around port
- Manual override not available
- Spare parts not available. The valve is supplied c/w coil and plug

| SELECTION TABLE | VALVE | connection | pipe size | CV flow rate | Operating Pressure Differential | | | COILS | | Power | FUSES* |
|-----------------|----------|----------------|-----------|--------------|---------------------------------|----------|----------|-----------------------|------------|---------|--------|
| | Code | | (inch) | | (psi) | AC (psi) | DC (psi) | Code | (Volts/Hz) | Holding | (m/A) |
| | N326CVEN | 1/8 NPT female | 5/64 | 0.09 | 0 | 145 | 145 | N253 | 24V DC | 10,1 w | 800 |
| | | | | | | | N203 | 24V 50/60Hz | 7,2 VA | 800 | |
| | | | | | | | N403 | 110V 50Hz - 120V 60Hz | 9,1 VA | 200 | |
| | | | | | | | NK03 | 200V 50Hz - 220V 60Hz | 8,6 VA | 200 | |
| | | | | | | | N703 | 230V 50Hz - 240V 60Hz | 8,5 VA | 100 | |

* A mains fuse or an equivalent means of protection (breaking value shown on table for each coil) shall be installed on the mains supply line. Absence of mains protection is a non conformity to safety standards (EC Directives 94/9/CE and 1999/92/CE) and is a possible cause of explosion.

Cable type H05V2V2-F 3G1
standard length = 152,4 inch



MAXIMUM TORQUE 12 Nm

- use port 1 for **NORMALLY OPEN** valves (RPN/RCN)
- use port 2 for **NORMALLY CLOSED** valves (PN-BPN/CN-BCN)

DIMENSIONS & WEIGHTS

| valve | A | B | C | D | weight |
|-------|--------|--------|--------|--------|--------|
| code | (inch) | (inch) | (inch) | (inch) | (lbs) |
| N326 | 2.85 | 1.35 | 2.91 | 3.38 | 1.49 |