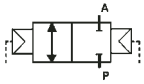


## 2 WAY PISTON VALVE 1/2 ÷ 2 DOUBLE ACTING; STAINLESS STEEL



**double acting  
flow over / under seat**

**TYPE: REGULAR DA**

### TECHNICAL SPECIFICATIONS

Media: water, oil, air, aggressive media and steam <sup>(1)</sup>
Media temperature: 14°F ÷ 356°F
Ambient temperature: 14°F ÷ 140°F
Pilot media: air, inert gases, water
Body material: cast AISI 316L (ASME SA351/351M GRADE CF3M)
Bonnet material: cast AISI 316L (ASME SA351/351M GRADE CF3M)
Actuator body material: Polyamide PA6 (reinforced fiberglass 30%)
Seal material: PTFE
Position indicator as standard



### OPTIONS

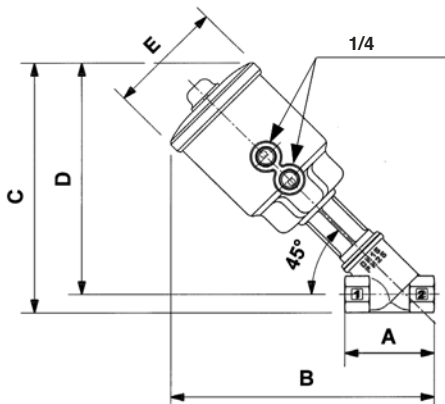
Manual override (ex. code DPN205STW <u>M</u> 0)
Stroke regulator (ex. code DPN210STJ <u>R</u> 0)
Travel switch (ex. code DPN208LTZ <u>I</u> 0)
GAS connection (ex. code DPG205STW <u>0</u> 0)
Weld ends

### BENEFITS

Waterhammer-free design (with flow direction 2 → 1)
Actuator housing rotation 360°
Design suitable for vacuum applications up to 8 mTorr

SELECTION TABLE	VALVES	pipe size	orifice	flow rate	OPD working pressure <sup>(1)</sup>		flow direction	OPD pilot pressure <sup>(2)</sup>		actuator ø
	Code	(NPT)	(inch)	(gpm)	min (psi)	max (psi)		min (psi)	max (psi)	(mm)
	DPN205STW00	1/2	5/8	6.8	0	232	1 ↔ 2	26	29	63
DPN206STX00	3/4	3/4	11	0	232	1 ↔ 2	29	55		
DPN207STY00	1	1	18	0	232	1 ↔ 2	43	72		
DPN208STZ00	1 1/4	1 1/4	28	0	232	1 ↔ 2	65	87		
DPN209STK00	1 1/2	1 1/2	49	0	232	1 ↔ 2	94	101		
DPN210STJ00	2	2	66	0	174	1 ↔ 2	130	145		

(1) Steam: Max. working pressure 145 psi - (2) Minimum pilot pressure at max. working pressure; for lower working pressure see selection charts



### DIMENSIONS & WEIGHTS

pipe size	actuator ø	A	B	C	D	E	weight
(NPT)	(mm)	(inch)	(inch)	(inch)	(inch)	(inch)	(lbs.)
1/2	63	2.56	7.56	7.24	6.73	3.35	2.65
3/4	63	2.95	7.80	7.55	6.93	3.35	2.87
1	63	3.54	8.35	8.07	7.28	3.35	3.31
1 1/4	63	4.33	8.86	8.54	7.60	3.35	4.19
1 1/2	63	4.72	9.06	8.85	7.80	3.35	4.63
2	63	5.91	9.76	9.48	8.15	3.35	6.39