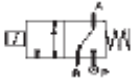


## 3 WAY NC DIRECT ACTING SOLENOID VALVE, 1/8 AND 1/4



normally closed

TYPE: D362/363

### TECHNICAL SPECIFICATIONS

- Media: water, air, oil
- Media temperature: 14° F - 266° F
- Ambient temperature: 14° F - 122° F
- Body material: brass (C37700)
- Orifice material: stainless steel (AISI 303)
- Operator material: stainless steel
- Seal material: VITON®
- Coil power: AC = 15 VA (holding)  
AC = 30 VA (inrush)  
DC = 10 W
- Protection class: NEMA 4 (with connector)



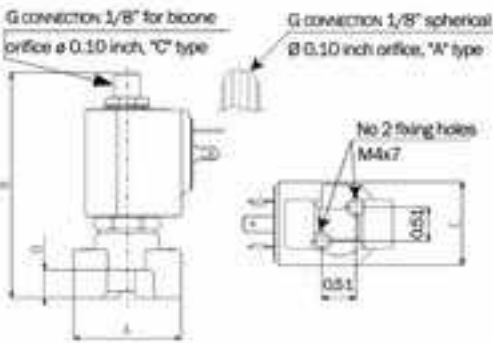
### OPTIONS

- Normally open (Ex code RD362CVCN)
- Manual override (Ex code D362CVGNM)
- EPDM seal for air and hot water MAX 248° F (Ex code D362CECN)
- RUBY seal 14° F - 356° F for high temperature with class "H" coils (Ex code D363AREN 7201)
- Armature tube with G connection 1/8" spherical (Ex code D362AVCN)
- CE coils on request (Ex code 7700)

### SELECTION TABLE

SELECTION TABLE	VALVES	pipe size	orifice	CV flow rate	Operating Pressure Differential			COILS	
					min	max			
						liquids	gas		
Code	(NPT)	(inch)	(gpm)	(psi)	ac	dc	Code	(Volts/Hz)	
D362CVCN	1/8	1/16	0.09	0	217	217	725R	24/dc	
D362CVEN	1/8	5/64	0.15	0	145	145	720R	24/50 - 60	
D362CVGN	1/8	3/32	0.24	0	101	101	740R	110/50 - 120/60	
D363CVCN	1/4	1/16	0.09	0	217	217	760R	200/50 - 220/60	
D363CVEN	1/4	5/64	0.15	0	145	145	770R	230/50 - 240/60	
D363CVGN	1/4	3/32	0.24	0	101	101			
D363CVHN	1/4	1/8	0.31	0	72.5	72.5			
D363CVLN	1/4	5/32	0.42	0	51	51			
D363CVNN	1/4	3/16	0.52	0	36	36			
D363CVPN	1/4	1/4	0.59	0	22	22			

### DIMENSIONS & WEIGHTS



pipe size	A	B	C	D	weight
(NPT)	(inch)	(inch)	(inch)	(inch)	(lbs.)
1/8	1.57	3.42	1.25	0.43	0.55
1/4	1.57	3.42	1.25	0.43	0.55