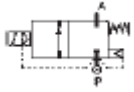


2 WAY NC PILOT OPERATED PISTON VALVE, 1/4 TO 1/2



normally closed

TYPE: D634/635/636DTTN1

TECHNICAL SPECIFICATIONS

Media: water, air, oil
 Media temperature: 14° F - 266° F
 Ambient temperature: 14° F - 158° F
 Body material: brass (C37700)
 Orifice material: stainless steel (AISI 303)
 Operator material: stainless steel
 Seal material: PTFE
 Coil power: AC = 25 VA (holding)
 AC = 50 VA (inrush)
 DC = 22 W
 Protection class: NEMA 4 (with connector)



OPTIONS

Electroless nickel plating treatment available on request

SELECTION TABLE	VALVES	pipe size	orifice	CV flow rate	Operating Pressure Differential			COILS	
					min	liquids	max		
	Code	(NPT)	(inch)	(gpm)	(psi)	ac	dc	Code	(Volts/Hz)
	D634DTTN1	1/4	3/8	1.46	4.35	1450	870	7278	24/dc
	D635DTTN1	3/8	3/8	1.66	4.35	1450	870	72K1	24/50 - 60
	D636DTTN1	1/2	3/8	1.73	4.35	1450	870	74K1	110/50 - 120/60
								77K1	230/50 - 240/60

DIMENSIONS & WEIGHTS			pipe size	A	B	C	D	weight
	(NPT)	(inch)	(inch)	(inch)	(inch)	(inch)	(lbs.)	
	1/4	2.13	3.94	Hex 11/16	0.61	1.025		
	3/8	2.13	3.94	Hex 11/16	0.61	1.025		
	1/2	2.13	3.94	Hex 11/16	0.61	1.025		