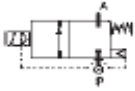


2 WAY NC PILOT OPERATED SOLENOID VALVE, 1/4 TO 1/2



normally closed

TYPE: D634/635/636

TECHNICAL SPECIFICATIONS

Media: hot water, steam
Media temperature: 176° F - 356° F
Ambient temperature: 14° F - 158° F
Body material: brass (C37700)
Orifice material: stainless steel (AISI 303)
Operator material: stainless steel
Seal material: PTFE
Coil power: AC = 18 VA (holding)
AC = 36 VA (inrush)
DC = 14 W
Protection class: NEMA 4 (with connector)



OPTIONS

Electroless nickel plating treatment (Ex code D636DTTKN)

SELECTION TABLE	VALVES	pipe size	orifice	CV flow rate	Operating Pressure Differential			COILS class "H" only	
					min	max			
	Code	(NPT)	(inch)	(gpm)	(psi)	liquids	gas	Code	(Volts/Hz)
	D634DTTN	1/4	3/8	1.46	4.35	145	145	7151	12/dc
D635DTTN	3/8	3/8	1.66	4.35	145	145	7251	24/dc	
D636DTTN	1/2	3/8	1.73	4.35	145	145	7201	24/50 - 60	
							7401	110/50 - 120/60	
							7601	200/50 - 220/60	
							7701	230/50 - 240/60	

DIMENSIONS & WEIGHTS			pipe size	A	B	C	D	weight
			(NPT)	(inch)	(inch)	(inch)	(inch)	(lbs.)
	1/4	2.13	3.94	Hex 11/16	0.61	1.025		
	3/8	2.13	3.94	Hex 11/16	0.61	1.025		
1/2	2.13	3.94	Hex 11/16	0.61	1.025			