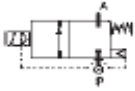


2 WAY NC PILOT OPERATED SOLENOID VALVE, 1/4 TO 1



normally closed

TYPE: D887/888/889/890/892

TECHNICAL SPECIFICATIONS

Media: hot water, steam
 Media temperature: 14° F - 302° F
 Ambient temperature: 14° F - 158° F
 Body material: brass (C37700)
 Orifice material: stainless steel (AISI 303)
 Operator material: stainless steel
 Operator seal material: EPM PX 70/80
 Diaphragm material: PTFE
 Main seal material: EPM PX 70/80
 Coil power: AC = 18 VA (holding)
 AC = 36 VA (inrush)
 DC = 22 W
 Protection class: NEMA 4 (with connector)



OPTIONS

SELECTION TABLE	VALVES	pipe size	orifice	CV flow rate	Operating Pressure Differential			COILS class "H" only	
					min	liquids	gas		
	Code	(NPT)	(inch)	(gpm)	(psi)	ac	dc	Code	(Volts/Hz)
	D887DPVN	1/4	7/16	2.43	4.35	65	65	7278	24/dc
	D888DPVN	3/8	7/16	3.47	4.35	65	65	7201	24/50 - 60
	D889DPVN	1/2	7/16	3.82	4.35	65	65	7401	110/50 - 120/60
	D890DPVN	3/4	7/16	4.86	4.35	65	65	7601	200/50 - 220/60
	D892DPVN	1	7/16	5.20	4.35	65	65	7701	230/50 - 240/60

DIMENSIONS & WEIGHTS		pipe size	A	B	C	D	weight
		(NPT)	(inch)	(inch)	(inch)	(inch)	(lbs.)
		1/4	2.95	3.74	2.09	0.55	1.1
		3/8	2.95	3.74	2.09	0.55	1.1
		1/2	2.95	3.74	2.09	0.55	1.1
		3/4	3.35	4.13	2.09	0.87	1.76
		1	3.35	4.13	2.09	0.87	1.76