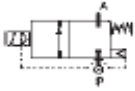


2 WAY NC PILOT OPERATED SOLENOID VALVE, 1/4 TO 1



normally closed

TYPE: B203/204/205/206/222

TECHNICAL SPECIFICATIONS

- Media: water, oil, air
- Media temperature: 14° F - 194° F
- Ambient temperature: 14° F - 122° F
- Body material: brass (C37700)
- Operator material: stainless steel
- Operator seal material: VITON®
- Seal and diaphragm material: NBR
- Coil power: AC = 9 VA (holding)
AC = 14 VA (inrush)
DC = 6 W
- Protection class: NEMA 4 (with connector)



OPTIONS

- Normally open (Ex code RB206DBYN)
- Manual override (Ex code B204DBZNM)
- Speed control screw (only for B206DBYNV and B222DBYNV)
- EPDM seal for air and hot water MAX 248° F (Ex code B204DEZN)
- VITON® seal for air, water, oil MAX 266° F (Ex code B204DVZN)
- CE coils on request (Ex code 220Q)
- Available upon request version with pilot 0.57 inch and coil series 7000 (Ex code D205DBZ)

| SELECTION TABLE | VALVES | pipe size | orifice | CV flow rate | Operating Pressure Differential | | | COILS | |
|---------------------|--------|-----------|---------|--------------|---------------------------------|---------|------|-----------------|------------|
| | | | | | min | liquids | gas | | |
| | Code | (NPT) | (inch) | (gpm) | (psi) | ac | dc | Code | (Volts/Hz) |
| B203DBZN | 1/4 | 1/2 | 1.8 | 4.3 | 232 | 232 | 225R | 24/dc | |
| B204DBZN | 3/8 | 1/2 | 3.8 | 4.3 | 232 | 232 | 220R | 24/50 - 60 | |
| B205DBZN | 1/2 | 1/2 | 4.37 | 4.3 | 232 | 232 | 240R | 110/50 - 120/60 | |
| B206DBXN compact | 3/4 | 13/16 | 6.24 | 4.3 | 232 | 232 | 260R | 200/50 - 220/60 | |
| B206DBYN | 3/4 | 1 | 12.69 | 4.3 | 232 | 232 | 270R | 230/50 - 240/60 | |
| B222DBYN | 1 | 1 | 14.98 | 4.3 | 232 | 232 | | | |

| DIMENSIONS & WEIGHTS | pipe size (NPT) | A | B | C | D | weight |
|----------------------|--------------------|--------|--------|--------|--------|--------|
| | | (inch) | (inch) | (inch) | (inch) | (lbs.) |
| | 1/4 | 2.64 | 3.55 | 1.75 | 0.6 | 0.88 |
| | 3/8 | 2.64 | 3.55 | 1.75 | 0.6 | 0.88 |
| | 1/2 | 2.64 | 3.55 | 1.75 | 0.6 | 0.88 |
| | 3/4 compact | 3.23 | 4.2 | 1.97 | 0.8 | 1.32 |
| | 3/4 | 3.8 | 4.5 | 2.75 | 0.9 | 2.65 |
| | 1 | 3.8 | 4.5 | 2.75 | 0.9 | 2.65 |