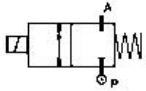


## 2 WAY NC DIRECT ACTING SOLENOID VALVE, 1/8 – 1/4

High Pressure

normally closed

TYPE: D262/263



### TECHNICAL SPECIFICATIONS

Media:	water, steam
Media temperature:	14° F - 266° F
Ambient temperature:	14° F - 122° F
Body material:	brass (C37700)
Orifice material:	stainless steel (AISI 303)
Operator material:	stainless steel
Seal material:	Ruby
Coil power:	AC = 18 VA (holding) AC = 36 VA (inrush) DC = 14 W
Protection class:	NEMA 4 (with connector)



### OPTIONS

SELECTION TABLE	VALVES	pipe size	orifice	CV flow rate	Operating Pressure Differential			COILS	
					min	liquids	gas		
	Code	(NPT)	(inch)	(gpm)	(psi)	ac	dc	Code	(Volts/Hz)
	D262DRAN1	1/8	1/32	0.03	0	2175	1015	7151	12/dc
	D262DRBN1	1/8	3/64	0.05	0	2175	1015	7251	24/dc
	D262DRCN1	1/8	1/16	0.09	0	2175	1015	7201	24/50 - 60
	D263DRAN1	1/4	1/32	0.03	0	2175	1015	7401	110/50 - 120/60
	D263DRBN1	1/4	3/64	0.05	0	2175	1015	7601	200/50 - 220/60
	D263DRCN1	1/4	1/16	0.09	0	2175	1015	7701	230/50 - 240/60

DIMENSIONS & WEIGHTS	pipe size	A	B	C	D	weight
	(NPT)	(inch)	(inch)	(inch)	(inch)	(lbs.)
	1/8	1.57	3.05	1.25	0.43	0.57
1/4	1.57	3.05	1.25	0.43	0.57	

